

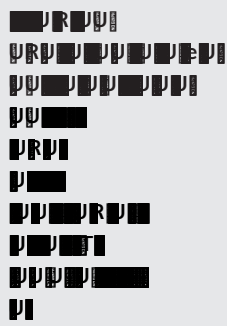
CAPITAL MARKET INSIGHTS



WYE RIVER
INDEPENDENT FINANCIAL ADVISORS

JANUARY 26, 2021

MARKET UPDATE



[Contact us](#) to learn more.

RECENT MARKET TRANSACTIONS & ASSOCIATED INTEREST RATES



EDUCATION

- Charlotte Public Schools, MI (1.92%)
- Seguin Independent School District, TX (2.09%)
- New York State Dormitory Authority, NY (2.84%)
- Florida Development Finance Corporation, FL (3.06%)



HEALTHCARE / LONG-TERM

- North Carolina Medical Care Commission, NC (1.51%)
- Montgomery County, OH (2.19%)
- California Municipal Finance Authority, CA (3.64%)
- Massachusetts Development Finance Agency, MA (2.06%)



ECONOMIC DEVELOPMENT

- Bannon Lakes Community Development District, FL (3.70%)
- Morris County Improvement Authority, NJ (2.54%)
- Montgomery Co. Housing Opportunities Commission, MD (2.10%)
- Maine Governmental Facilities Authority, ME (1.77%)



GENERAL INDUSTRY RANGES

- Education (1.80-2.50%)
- Power (1.00-1.05%)
- Transportation (1.80-2.15%)
- Water (1.85-2.00%)

KEY MARKET RATES

	Current	1 Month Prior	1 Year Prior
Federal Funds Rate	0.25	0.25	1.75
1-Month LIBOR	0.13	0.15	1.65
SOFR	0.05	0.07	1.54
Weekly VRDB	0.05	0.09	1.29
Revenue Bond Index*	2.58	2.57	3.04
10 Year Treasury	1.12	0.93	1.77

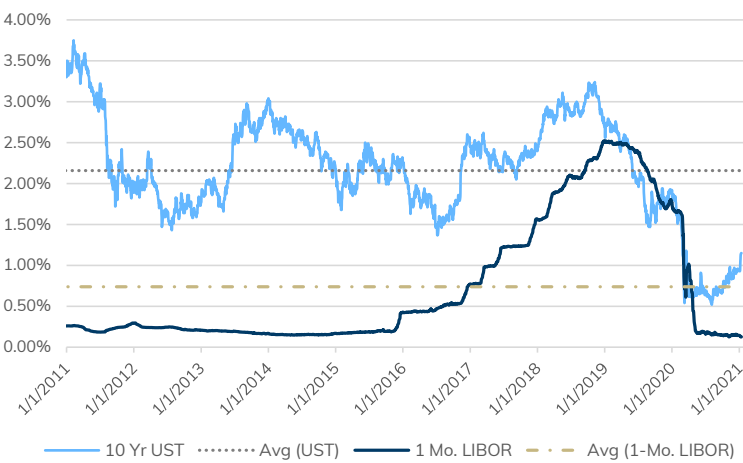
* Comprises 30-year revenue bonds with average rating of A1/A+ by Moody's and S&P

SWAP RATES

	Current	1 Month Prior	1 Year Prior
10-Year LIBOR Swap	1.09	0.94	1.63
15-Year LIBOR Swap	1.36	1.20	1.74
3-Month Fwd Premium*	0.04	0.03	0.00
12-Month Fwd Premium*	0.18	0.15	0.03
10-Y SIFMA/LIBOR Ratio	47.69	48.10	50.44
15-Y SIFMA/LIBOR Ratio	54.79	54.92	56.10

* Premium for forward starting 10 year LIBOR Swap

BENCHMARK LIBOR & TREASURY RATES



TAX-EXEMPT GENERAL OBLIGATION BOND YIELDS

	AAA	AA	A	BBB
1-Year	0.11	0.16	0.23	0.67
5-Year	0.19	0.29	0.48	0.93
10-Year	0.69	0.82	1.01	1.58
20-Year	1.21	1.38	1.60	2.19
30-Year	1.44	1.61	1.83	2.42



WYE RIVER
INDEPENDENT FINANCIAL ADVISORS



www.WyeRiver.com

Contact us today at 410-267-8811 to discuss your financial advisory needs or upcoming capital improvement project.

Annapolis, MD | Orlando, FL | Winston-Salem, NC